

KNOW GEORGIA'S PRODUCTS

KEY TO A NEW ECONOMY!

Agriculture

GEORGIA
HISTORICAL SOCIETY



GEORGIA LEADS THE SOUTH IN AGRICULTURE



RICH'S
ATLANTA

presents

"KNOW GEORGIA'S PRODUCTS"

Key to a New Economy

This Series of Newspaper Pages has been
planned to acquaint Georgians with the far-
reaching Agricultural Potentialities of their State

All Information is from the Georgia Agricultural Extension Service

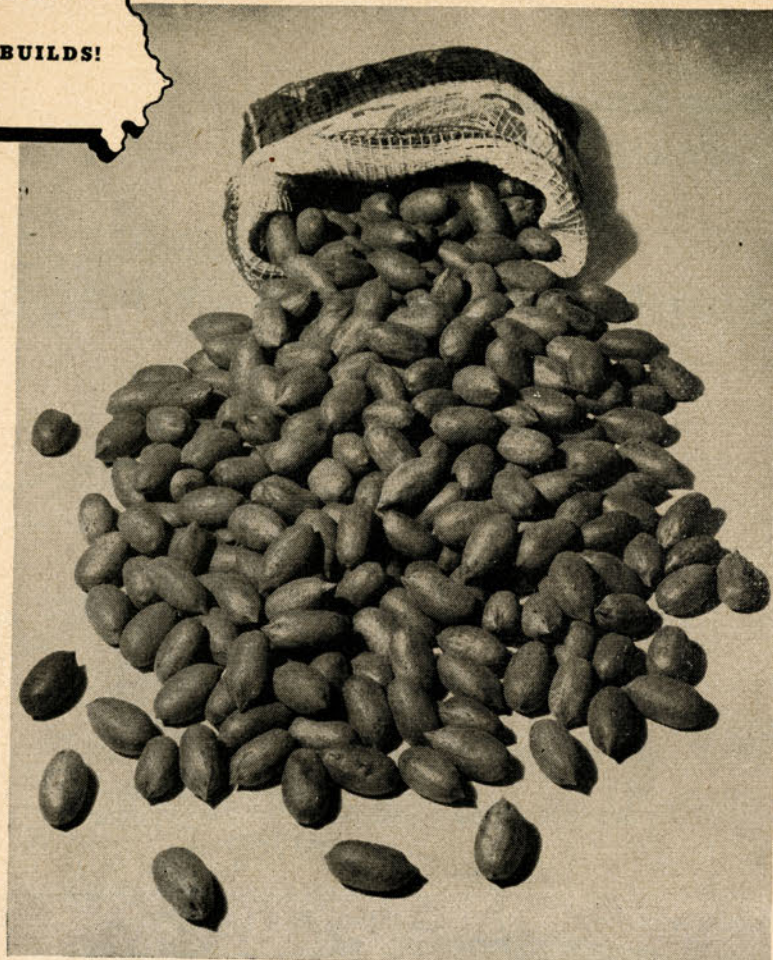
A Public Service sponsored by Rich's

1946

Sev'n Ch. of Comm. 8 7/7/61



Know Georgia's Products . . . Key To A New Economy!



Photograph by Kenneth Rogers

PAPERSHELL PECANS . . . IN

Albany

So many acres and varieties of pecans . . . packing and shelling plants for this hand-harvested crop . . . the familiar call letters of one of the radio stations tells the world that it's located in the World's Greatest Pecan Center!

Albany's nuts—along with her other agricultural pursuits—are diverse! She grows pest-proof tung whose oil has more than a hundred uses! She has Spanish peanuts, used in candy manufacture the world over! She raises livestock, cotton, tobacco, peaches, sweet potatoes, melons, and poultry—all of these are abundantly produced in Albany's surrounding trade territory!

Nature has blessed Albany and Dougherty County—and the people work for mutual progress! Their soil conservation and expanding economy stress the new spirit of ambition motivating Georgia's rural communities today!

Big national packers increase the turnover and raise the value of livestock in Albany! Crop rotation scientifically enhances the output of her enfolding acres! Electrically operated machinery cuts production and processing costs—a double insurance of higher farm incomes! Albany—with her varied and great agricultural assets—plans her crops as a limitless field for industries!

This is one of a Series of Pages appearing throughout Georgia to acquaint Georgians with the Agricultural Potentialities of their State.

All information is from the Georgia Agricultural Extension Service through the Local County Agent.

A GEORGIA INSTITUTION SINCE 1867 . . . **RICH'S**
Atlanta



Know Georgia's Products . . . Key To A New Economy!



Americus . . . City of Agricultural Abundance!

Peanuts worth \$2,000,000! Cotton and livestock valued at \$1,000,000! Grains and pecans with a yield of half a million each! Legume seeds worth \$100,000! This year Sumter County farmers sold a \$5,100,000 harvest in Americus—Georgia's City of Agricultural Abundance!

Fundamental factors guarantee the well-planned progress of Americus in the farm fields! Prosperous herds and pens, rich lands, equable climate—these are advantages which lend a bright outlook to her rural development! Horticultural authorities agree that edible plants produced anywhere in the world will grow around Americus!

Americus is a growing city with limitless opportunity for profitable agricultural interests! Today her diversified, intensified, and wise application of proved and experimental practices disclose new advantages every year! And her farms learn by experience!

Americus' cooperative livestock auction converts beef into cash in less than an hour's time! Her wood veneer plants and factories turn logs into commodities! Her canneries market her fresh produce—her creameries sell her dairy products—the hum of her gins means cash! This is Americus—center of one of Georgia's richest regions!

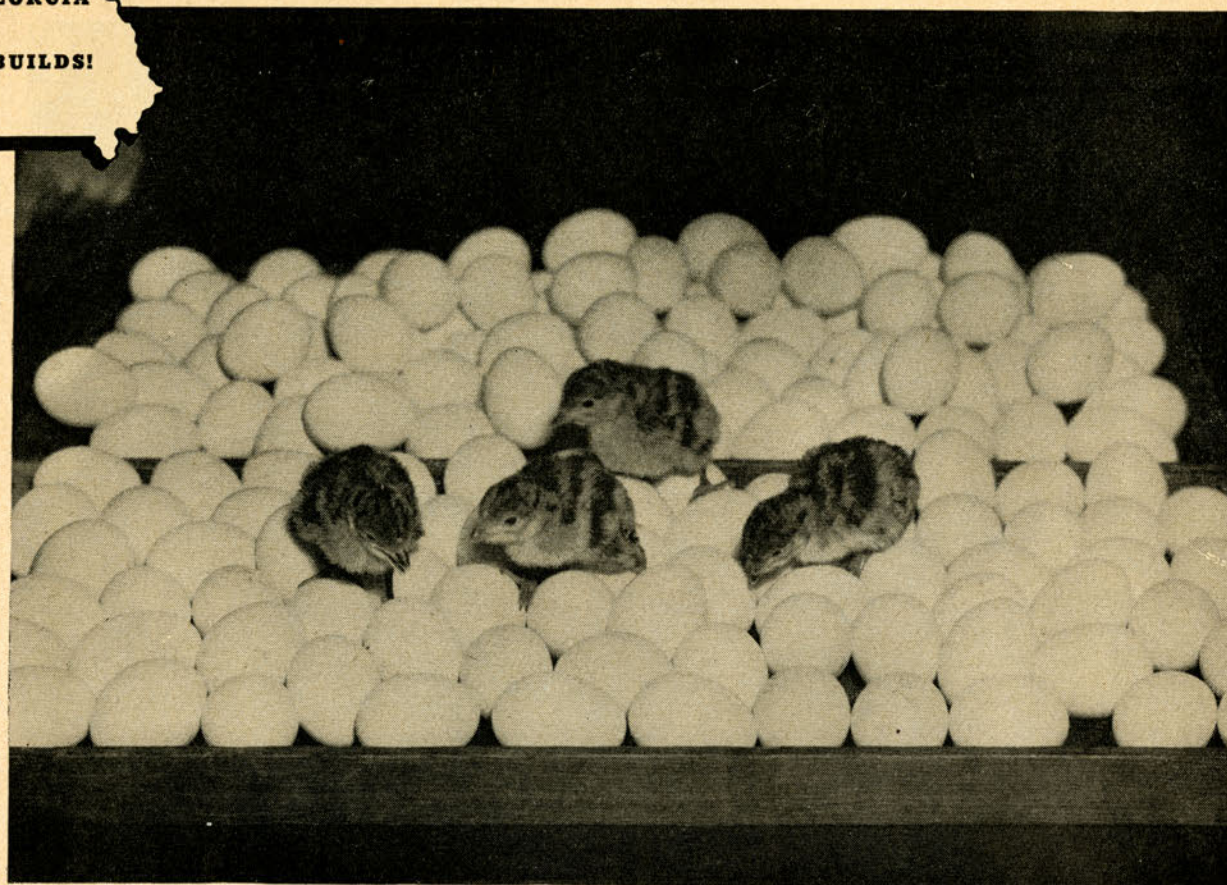
This is one of a Series of Pages appearing throughout Georgia to acquaint Georgians with the Agricultural Potentialities of their State.

All information is from the Georgia Agricultural Extension Service through the Local County Agent.

A GEORGIA INSTITUTION SINCE 1867 . . . **RICH'S**
Atlanta



Know Georgia's Products . . . Key To A New Economy!



Photograph by Kenneth Rogers

Athens . . . Georgia's Cooperative Farm City!

An old city with new ideas about agriculture! Home of Georgia's first cooperative creamery - and soon to have the first cooperative plant for producing evaporated milk! This is Athens . . . city that has helped Georgia's farming to reach its heights!

Athens is logical leader of the Piedmont Plateau's farming activity and industrial growth! The University's College of Agriculture and Georgia's Agricultural Extension Service carry from Athens to Georgia's farms a message -and a means-of abolishing the shackles of an archaic one-crop system! Athens is Georgia's proving ground!

Expanding activity at her creamery-growing sales at the Northeast Georgia livestock barn-these demand feed for livestock . . . and Clarke County farmers are meeting that demand with grain and corn which they rotate with cotton production on rich Georgia acres!

Fertilizer and cottonseed oil plants . . . tire cord and piece goods factories . . . markets and industries combine to place Athens in the center of revolutionary farm practices! Today Athens stands a link-between cotton field and fabric, between farm producer and consumer . . . a city which profoundly affects every life in Georgia.

This is one of a Series of Pages appearing throughout Georgia to acquaint Georgians with the Agricultural Potentialities of their State.

All information is from the Georgia Agricultural Extension Service.

A GEORGIA INSTITUTION SINCE 1867 . . . **RICH'S**
Atlanta



Know Georgia's Products . . . Key To A New Economy!



Augusta . . . Georgia's Farms' Market!

Agricultural outlet for the wares of 28 thriving counties in Georgia and South Carolina . . . center of a 50-mile radius known for infinite variety! This is Augusta—a busy, thriving market city where farmers fare well!

Cotton is still the chief "money crop" of these famous red acres—and Augusta is America's largest inland cotton market! A longer growing season and varied soils make Augusta a place for profitable truck farming, poultry-raising—for beef cattle, pork, and dairy products! Every kind of agriculture that exists brings money to Augusta!

Augusta has always been pre-eminently an agricultural center! Today, more than ever, she concentrates her efforts toward development of richer lands—to bring better living and a happier outlook to farmers!

A big cotton exchange—many warehouses and textile mills—these make her cotton community thrive! Purebred and purebred crosses of cattle and hogs guarantee better returns at the market—local feed crops and fruit markets mean high profit! Kaolin plants, cottonseed oil! This is Augusta—sponsor of foresighted farming!

This is one of a Series of Pages appearing throughout Georgia to acquaint Georgians with the Agricultural Potentialities of their State.

All information is from the Georgia Agricultural Extension Service through the Local County Agent.

A GEORGIA INSTITUTION SINCE 1867 . . . **RICH'S**
Atlanta



Know Georgia's Products . . . Key To A New Economy!



Photograph by Kenneth Rogers

TRUCK FARMING . . . IN

Brunswick

Main market of a region rich in produce gardens—base for important commercial fisheries—combination livestock and naval stores center! This is Brunswick—famed for her many products of the farm, the forest, and the sea!

Brunswick's temperate climate—her fertile soils—the Atlantic Ocean at her door—foreordained her agricultural advantages! Her piney woods provide an important source of productive wealth—as do the fisheries along her coast! Her warm weather and varied soils have been natural stimuli for diversity—a lesson easily learned!

Brunswick provides a market for every crop produced by every farmer in her section! Her harbor can care for the biggest ships afloat—her plants, factories, and mills signify a new era in Georgia's agricultural development.

Well-tended fields stretch out over rich earth—with lettuce, cauliflower, and other highly specialized crops! Well-fed cattle make her a livestock center! Pines reach in thousands of acres to add to landscape and to income. Brunswick's assets stand strong among the state's assets—for they offer limitless fields for industrialization!

This is one of a Series of Pages appearing throughout Georgia to acquaint Georgians with the Agricultural Potentialities of their State.

All information is from the Georgia Agricultural Extension Service through the Local County Agent.

A GEORGIA INSTITUTION SINCE 1867 . . . **RICH'S**
Atlanta



Know Georgia's Products . . . Key To A New Economy!



Photograph by Kenneth Rogers

Cordele

.. Peanut Center of the South!

Good old Georgia goobers—Cordele's 21,500,000 pounds edible peanuts, 3,000,000 pounds of peanut oil, 2,500 tons of peanut meal! Georgia tops the states in peanut production—and Cordele centers their producing area!

And peanuts are only a fraction of Cordele's annual agricultural picture! Just as potent are 14,000 acres of cotton—25,000 acres of corn—2,500 acres of oats! She produces 150,000 tons of hay, 1,250,000 pounds of pecans! She supplies the state with thousands of heads of beef cattle and hogs—her forests provide rosin and turpentine!

Just outside the city's limits is the only county owned and operated Hydroelectric Power Plant in the world! Today, Cordele literally lights the way for her rural citizens to accomplish new achievements on her farms!

Modern feed and oil mills purchase almost all their ingredients locally! A freezer-locker plant keeps Cordele's meats, fruits and vegetables fresh! She supports a weekly auction in her livestock barns—has built three naval stores plants which offer balanced utilization of her timber products! Today—Cordele is agriculturally active!

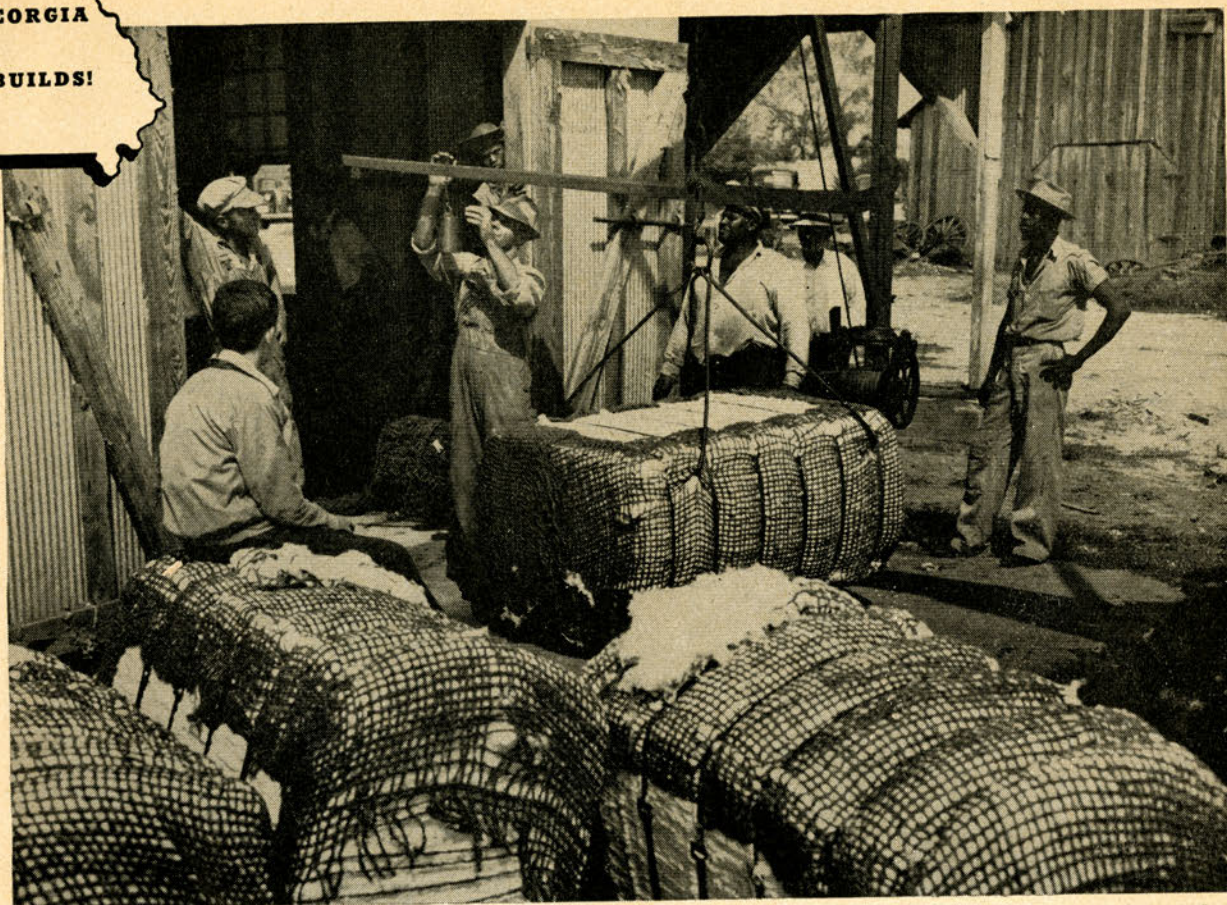
This is one of a Series of Pages appearing throughout Georgia to acquaint Georgians with the Agricultural Potentialities of their State.

All information is from the Georgia Agricultural Extension Service through the Local County Agent.

A GEORGIA INSTITUTION SINCE 1867 . . . **RICH'S**
Atlanta



Know Georgia's Products . . . Key To A New Economy!



Dublin . . . CITY OF CASH CROPS!

Cotton culture with a new emphasis on yield-per-acre and quality . . . over \$2,000,000 trading at the livestock auction barn every year! A vast assortment of crops fostered by her gentle climate! Such is the energetic enterprise which marks Dublin's agricultural progress!

Cotton leads the parade of cash crops in Laurens County—and her farmers have proved that, when combined with other crops, cotton can bring prosperity! Peanuts, livestock, timber products, corn and sweet potatoes—these are the crops which supplement their incomes!

The same natural assets which make Dublin's crops thrive, operate to put Dublin in the forefront of utilization of her products! Today she concentrates on processing as well as producing—for added security! She has become the trading center for a 50-mile radius!

Home of the largest wholesale grocery center of any city her size in the nation . . . an oil mill, a peanut storage warehouse, cotton gins, fertilizer plants, cooperative dairies, poultry markets! These are the assets which lead Dublin to a future of farming advancement!

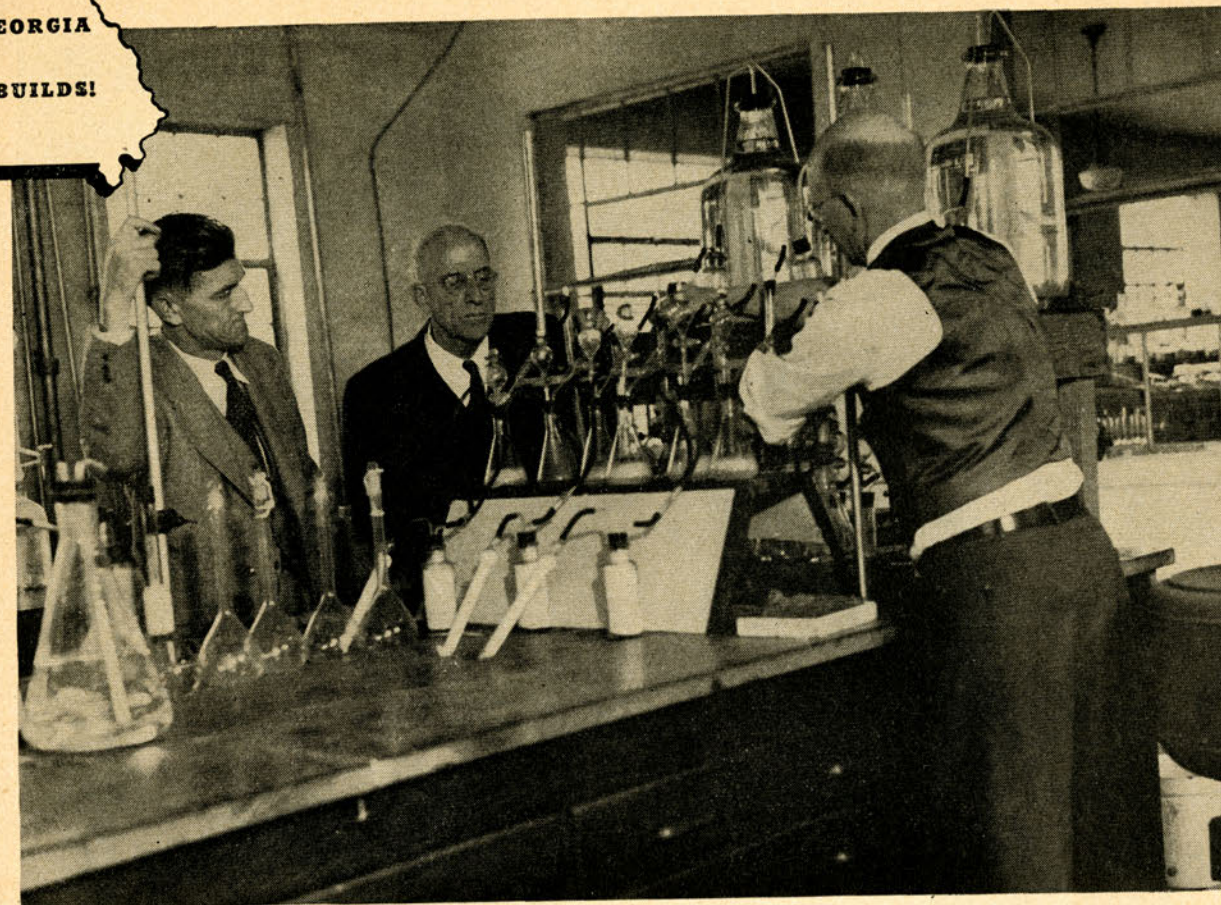
This is one of a Series of Pages appearing throughout Georgia to acquaint Georgians with the Agricultural Potentialities of their State.

All information is from the Georgia Agricultural Extension Service through the Local County Agent.

A GEORGIA INSTITUTION SINCE 1867 . . . **RICH'S**
Atlanta



Know Georgia's Products . . . Key To A New Economy!



Photograph by Kenneth Rogers

Griffin . . . THE PIMENTO CITY!

Pioneer of diversification on her farms . . . Griffin's huge pimento canneries produce 10,000,000 cans during the short pepper season and then convert their efforts to canning other vegetables and fruits! This is Griffin—center of ingenuity for year-round production!

Just as crop diversification has added to Griffin's wealth, so has a blending with industry brought prosperity! Her canneries send her garden vegetables around the world! Her mills manufacture her cotton! Her livestock comes into town on the hoof—headed for her slaughter houses!

Today Griffin leads toward a balanced economy! Her splendid Georgia Experiment Station tests and develops new and better products for Georgia's homes and farms! In this station are developed new uses for the products of Georgia's rich and varied soil!

Griffin's canneries, her mills, her packing plants turn out an increasing variety of products! And today new products take their places beside the old! This is Griffin—Georgia's progressive city who is encouraging productivity and resourcefulness for agriculture throughout the state!

This is one of a Series of Pages appearing throughout Georgia to acquaint Georgians with the Agricultural Potentialities of their State.

All information is from the Georgia Agricultural Extension Service through the Local County Agent.

A GEORGIA INSTITUTION SINCE 1867 . . . **RICH'S**
Atlanta



Know Georgia's Products . . . Key To A New Economy!



Photograph by Kenneth Rogers

DAIRY DEVELOPMENT . . . IN *La Grange*

La Grange's name derives from a word meaning farm! La Grange's thriving industries depend upon farm production! La Grange's new scientific farm industry of dairying now vies with cotton—her other most valuable crop!

A happy combination of hustling industry and thriving agriculture in La Grange typifies the vigorous forward-moving New South! Troup County cotton runs the gamut from field to fabric! Livestock products feed the people of the city, county—and the world beyond! An abundance of peaches, pimientos and foodstuffs are marketed, processed, and shipped locally!

La Grange goes modern in every phase that will strengthen her economy! Soil conservation, timber production, and booming businesses tie together the City-County program of utilizing industry to make agriculture profitable!

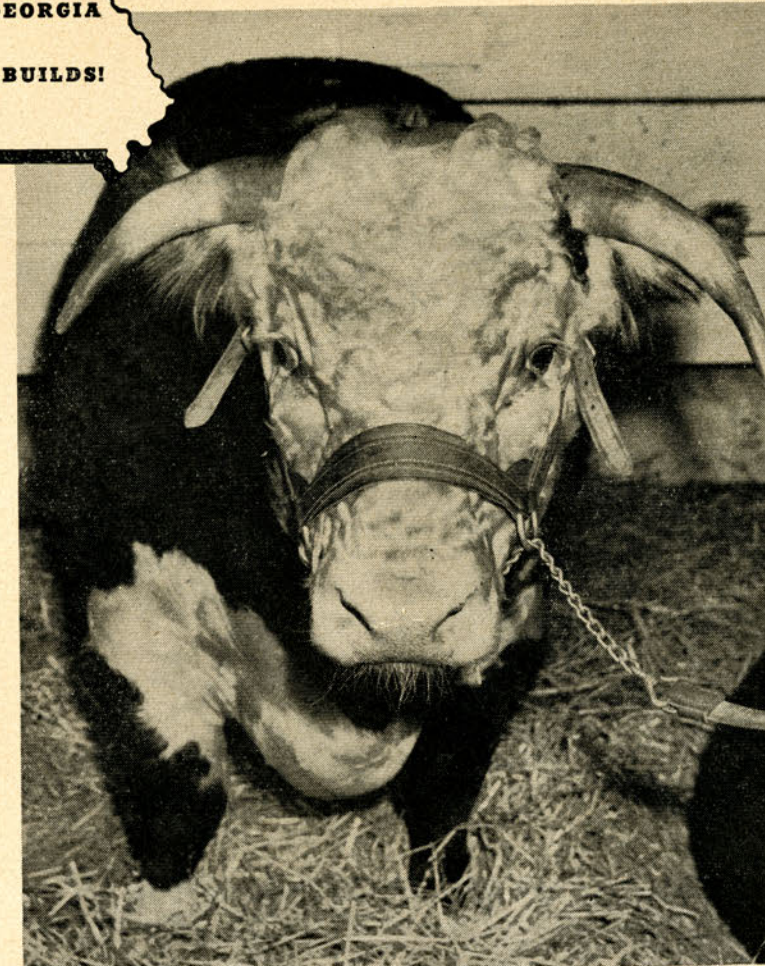
Terrace building, cover crops, and forest conservation protect La Grange's resources! Mills and factories convert her cotton into useful products! A city-county canning plant last year processed more than 182,000 pints of food! The per-acre yield of her crops grows steadily! La Grange practices crop diversification—with the diversification of her farms and her factories!

This is one of a Series of Pages appearing throughout Georgia to acquaint Georgians with the Agricultural Potentialities of their State.
All information is from the Georgia Agricultural Extension Service through the Local County Agent.

A GEORGIA INSTITUTION SINCE 1867 . . . **RICH'S**
Atlanta



Know Georgia's Products . . . Key To A New Economy!



Photograph by Kenneth Rogers

Moultrie . . . Georgia's Farmer's Money-Market!

Sleek, well-fed cattle indicative of Georgia's conversion to the prosperous practice of livestock production! Well-tended fields with rich harvests the year round! Moultrie—Georgia's money-market for her farmers . . . in the midst of agricultural munificence!

Moultrie's money changes hands for pure-bred cattle—the only kind that can be exhibited or sold in her livestock auditorium! Her meat-packing plant is the largest in the entire southeast! Colquitt County's 144,000 cultivated acres yield a great wealth of products which come to her for processing, manufacturing, and shipping to all the world!

Today, scientific farming works a miracle on these famous farms of Moultrie! Experiments have made them acknowledged leaders in creating the proper and profitable balance between supply and demand . . . and Moultrie supplies modern methods for marketing products!

Her peanut processing plant and oil mill convert raw products into finished form! Her factories turn cotton into products. She sells over 1,000 head of registered purebred beef-type cattle annually! Her new Farmer's Market will speed her other products to the world! Moultrie is a city which is giving new meaning to an agricultural economy!

This is one of a Series of Pages appearing throughout Georgia to acquaint Georgians with the Agricultural Potentialities of their State.
All information is from the Georgia Agricultural Extension Service through the Local County Agent.

A GEORGIA INSTITUTION SINCE 1867 . . . **RICH'S**
Atlanta



Know Georgia's Products . . . Key To A New Economy!



Photograph by Kenneth Rogers

EMPHASIS ON LIVESTOCK . . . IN *Rome*

Northwest Georgia's leading industrial city, surrounded by the fertile rolling plains of the Rome valley . . . with a boundless supply of raw materials for original enterprise! Rome combines her agriculture with industry!

Rome's attainments are such as to make any Georgian proud! Here is the heart-warming review of natural resources, fertile soils, thriving vegetation . . . all geared to scientific industrial development! Her opportunity is explained by barns where pedigreed cattle are bred, by fields where food crops are cultivated, by forests where timber is cut! Her income today will increase tomorrow!

Rome's agrarian-industrial link-up is well illustrated by her progressive livestock production. In 1940, her Chamber of Commerce sponsored the Coosa Valley Auction Barn that last year sold 19,763 head—for \$923,184!

Rome's businessmen and farmers team together for low-cost producing and marketing. Many acres of land have been re-claimed and planted as permanent pastures or forest range. Approved farming methods and new uses for her crops have been introduced! Rome is creating a balanced economy for her farmers—an economy that is proving the basis of her industry as well.

This is one of a Series of Pages appearing throughout Georgia to acquaint Georgians with the Agricultural Potentialities of their State.
All information is from the Georgia Agricultural Extension Service through the Local County Agent.

A GEORGIA INSTITUTION SINCE 1867 . . . **RICH'S**
Atlanta



Know Georgia's Products . . . Key To A New Economy!



Photograph by Kenneth Rogers

NAVAL STORES . . . IN *Savannah*

An excellent harbor bustling with activity . . . huge ships from the seven seas . . . a significant cotton and lumber center . . . the largest naval stores market and shipping point in the world . . . Georgia's Seaport—Savannah!

Savannah profits from her products—the familiar and the newly-developed. Prolific pine forests pour bounty into her industries—turpentine, timber, pulpwood, and the new wood celluloses! She changes bales of cotton into textiles, tire cord, and rayon! She markets, processes, and distributes livestock and crops from her nearby farms!

Savannah—with the products from hundreds of thousands of forestland and cotton acres—welcomes "the new age of cellulose!" She is turning her talents today to create new industries from them to balance her farm economy!

Tremendous plants manufacture pulp and kraft papers! A sugar refinery, a seafood cannery—all prepare specialized products! Fertilizer works and lumber mills strive to meet demand! Factories and mills turn out finished cotton products! Savannah's industries are impetus for an up-swing in Georgia's sound farming program!

This is one of a Series of Pages appearing throughout Georgia to acquaint Georgians with the Agricultural Potentialities of their State.
All information is from the Georgia Agricultural Extension Service through the Local County Agent.

A GEORGIA INSTITUTION SINCE 1867 . . . **RICH'S**
Atlanta



Know Georgia's Products . . . Key To A New Economy!



DIVERSIFICATION . . . IN

Thousands of juicy red-meated watermelons sent to the nation's markets—forests and preserves abounding with quail, deer, fish—tall, long-leaf pines . . . these unusual crops emphasize Thomasville's diversified practices!

Here's where Georgia's crop diversification has made its most spectacular gains! Peanuts, pecans, corn, garden vegetables, melons—fruits and vegetables which grow profusely in a warm, gentle climate! Georgia cane syrup—tomato plants are shipped to northern growers! Livestock and naval stores are a source of increasing income!

Thomasville

Thomasville's agricultural activity is general—on fine estates and small farms alike! Mechanization and modern methods have shown Thomas County citizens the way to greater wealth—and to more abundant living!

Meat processing and packing plants—and an auction sale barn add scientific livestock to Thomas County's farm income! Sawmills, crate factory, and a gum plant utilize forest supplies of this pine-packed section! Cotton gins, nut shippers, product plants promote a wider range! Thomasville truly follows the golden rule of crop diversification!

This is one of a Series of Pages appearing throughout Georgia to acquaint Georgians with the Agricultural Potentialities of their State.
All information is from the Georgia Agricultural Extension Service through the Local County Agent.

A GEORGIA INSTITUTION SINCE 1867 . . . **RICH'S**
Atlanta



Know Georgia's Products . . . Key To A New Economy!



Photograph by Kenneth Rogers

Tifton . . . **GEORGIA'S GARDEN CITY!**

700-million tomato plants . . . 950-million cabbage plants . . . 900-million potato plants . . . 100-million onion plants—these are grown in Tifton annually and shipped all over the nation! For Tifton is the garden-plant shipping center!

Tifton's fields have been proved for profitable diversified farming—deliberately, carefully! Last year alone she paid over \$15,000,000 for farm produce in this order: livestock, tobacco, peanuts, plants, naval stores, cotton and cotton seed, produce, pecans, melons! No longer now need Tift County bow to the devastating power of one single crop!

As a marketing center for so many products, Tifton has a well-balanced program of progress! Her Abraham Baldwin Agricultural College and Coastal Plain Experiment Station are leading Georgia's farmers to better ways!

Five large tobacco warehouses, two peanut-shelling plants . . . an oil mill, a naval stores plant, a cotton mill! Meat-packing plant and three milk-processing and distributing plants! Two freezer-locker and meat-curing plants in the process of being built! This is Tifton—garden city—at the top rung of Georgia's rural attainments!

This is one of a Series of Pages appearing throughout Georgia to acquaint Georgians with the Agricultural Potentialities of their State.
All information is from the Georgia Agricultural Extension Service through the Local County Agent.

A GEORGIA INSTITUTION SINCE 1867 . . . **RICH'S**
Atlanta



Know Georgia's Products . . . Key To A New Economy!



Photograph by Kenneth Rogers

VARIETY . . . IN

Valdosta

Valdosta's richest resource is the number of her products! Timber and tobacco and yams . . . pecans, livestock, cover crops . . . these and scores of others are significant evidence of Valdosta's variety of agricultural products!

Valdosta is the home of the state's largest Turpentine Cooperative—the wood center of the best naval stores production belt. Her softwood and hardwood forests are carefully tended—to encourage replenishment of their valuable supply! The same climatic advantages which make Valdosta a popular resort, give Lowndes County acres their longer and more diverse growing season!

*This is one of a Series of Pages appearing throughout Georgia to acquaint Georgians with the Agricultural Potentialities of their State.
All information is from the Georgia Agricultural Extension Service through the Local County Agent.*

Valdosta fully realizes that rural and urban prosperity are inevitably linked. Soil conservation, a definite cotton program, and improved farm machinery are a few of the measures Valdosta uses to make farms profitable!

Valdosta's livestock pavilion is scene of frequent shows and sales—and "club boy" projects! Now, she adds dairy and beef cattle and poultry production to hog-raising success. Valdosta's flue-cured and cigar-wrapper tobaccos are in great demand! She encourages her county's hybrid corn and small grain crops! All Georgia takes pride in the range of Valdosta's agricultural resources!

A GEORGIA INSTITUTION SINCE 1867 . . . **RICH'S**
Atlanta



Know Georgia's Products . . . Key To A New Economy!



Photograph by Kenneth Rogers

Waycross . . . Center of Farm Activities!

Center of one of the richest tobacco and naval stores areas in the world . . . center of a productive pecan belt . . . center of a fast-expanding livestock producing area! This is Waycross . . . center of many agricultural resources!

Waycross' abundant wood supply brings a 3-fold income in timber, turpentine, pulpwood! Twice in the past three years, Waycross has led the state in the average price paid for tobacco! Her near-by tupelo trees and gallberry bushes have created a profitable bee-keeping industry . . . pecan groves bear a profuse harvest!

Waycross' railroads are the hub of the agricultural excellence which radiates around her. In 1946, her civic clubs will promote contests for pure-bred livestock production and projects which conserve soil for the future!

A new farmers' cooperative serves her farmers! A livestock auction market is under construction! A \$100,000 pine-gum steam processing plant nears completion! And plans are being formulated to expand her bright-leaf tobacco auction! This is Waycross—proof that the building of an agrarian industrial economy grows with Georgia!

*This is one of a Series of Pages appearing throughout Georgia to acquaint Georgians with the Agricultural Potentialities of their State.
All information is from the Georgia Agricultural Extension Service.*

A GEORGIA INSTITUTION SINCE 1867 . . . **RICH'S**
Atlanta



A PUBLIC SERVICE, SPONSORED BY

RICH'S
ATLANTA